



SunBrush *mobil* Track Flex

Versatile Solar Cleaning Solution



KRAMER
on the safe side

Features & Technical Specifications



TrackFlex Features

1 TrackFlex Effekt

The TrackFlex Ram enables boom angle adjustment, which offers effective cleaning of tracking systems all day long. It also caters for narrow row width as the carrier vehicle is brought closer to the panels. Operates in narrow rows as well.

3 Transport Position

Hydraulic ram allows for the folding of the SunBrush on the right hand side of the carrier vehicle for safe transport. Controlled from the SunBrush Joystick.

5 Freely Pivoting

The brush system is suspended via a freely pivoting hanging point. This enables the brush to self regulate its angle as the panels track throughout the day and/or ground contours change.

2 WashTronic System

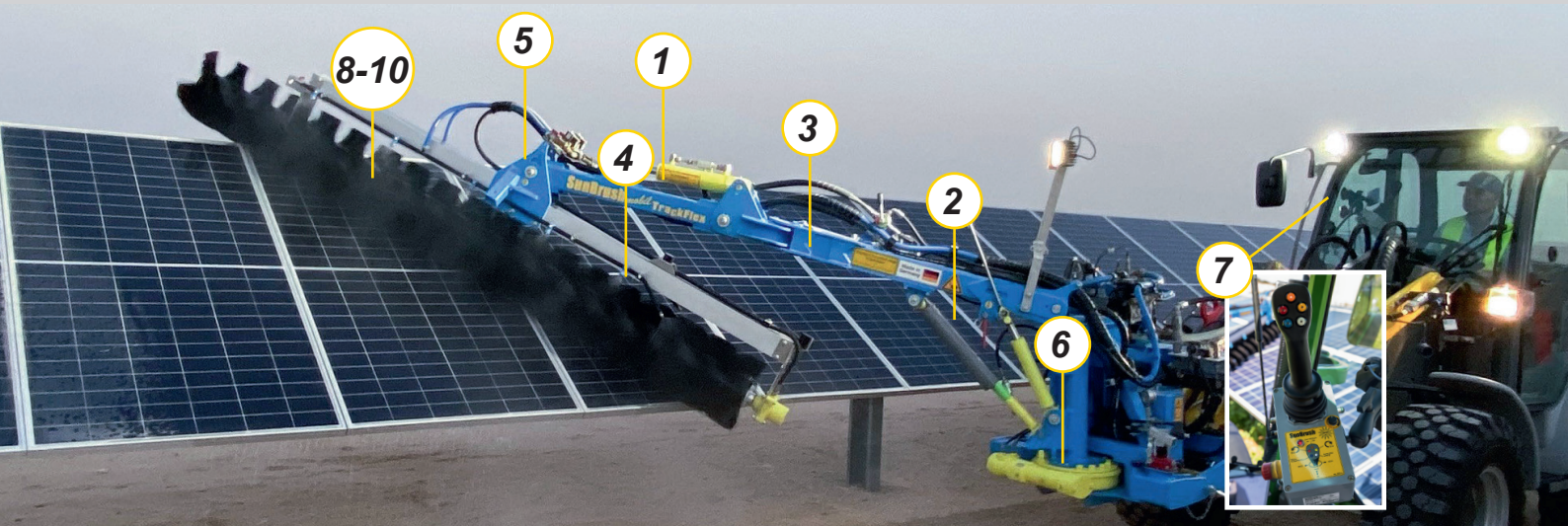
Our patented WashTronic levelling system offers an automatically regulating, constant and controlled pressure between the brush and panels, regardless of ground contours. Built as standard in every SunBrush, we can guarantee a consistent and even cleaning with no damage.

4 Integrated Wet & Dry Cleaning

Water lines are built in as standard throughout the machine. Pre-soak and rinse are controlled by through the SunBrush joystick, providing a thorough clean.

6 180° Cleaning

Hydraulic swivel motor design allows for cleaning on the right and left of the carrier vehicle.



7 Joystick Control

Intuitive can-bus joystick control offers safe and easy operation from the vehicle cab. Various control and monitoring functions are integrated.

8 Brush Lengths

Different brush lengths are available depending on the array to be cleaned. Brushes are easily interchangeable and range from 3 Meter to 5,5 Meter.

9 Brush Options

Ø 350mm, Ø 500mm Brush Options available for the cleaning of different panels and arrangements.



350mm: Brush is the most popular brush option. Designed for all fixed tilt arrays and the majority of tracking systems.



500mm: Brush is designed specifically for NexTracker systems. The longer bristles can pass straight over the bearing assemblies.

Panel Arrangement	Panel Table-Height	Required Brush Length
Single Portrait	2 Meter	3 Meter
Double Portrait	4 Meter	5 Meter
Triple Portrait	6 Meter	7 Meter
Four Landscape	4 Meter	5 Meter
Six Landscape	6 Meter	7 Meter

10 Certified Brush

Scan this QR Code for official wet & dry-cleaning study carried out by the University of Applied Sciences Ulm.





TrackFlex Kramer

Comfortable Working Area Thought-Out Down to the Last Detail

From the operator's seat to the steering wheel, every detail is consequently adjusted to the operator's needs. The result is maximum comfort, optimal ergonomics and functionality. In addition, the large glass surfaces always give the operator an unobstructed view of the attachment.

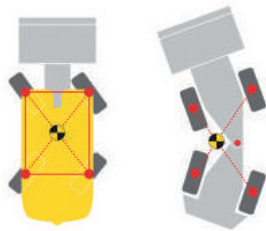
The cabin is equipped with a rear-view mirror, a tilt-adjustable steering column, rear window heating as well as four work lights for better working at night. With the ergonomically shaped joystick, you can also work fatigue-free on long days. Additional options, such as a two-stage entry as well as an air-sprung operator's seat with heated set, complete the offering.



Key Features

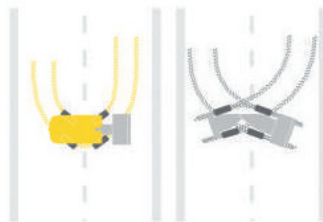
- **3 steering mode**
Convenient Maneuverability in tight spaces.
- **Cabin & AC**
Comfort work atmosphere for long continuous work.
- **Auto low speed and manual throttle**
Can help operator avoid fatigue by preselecting speed and throttle level. Operator can focus cleaning aspects more than driving the loader.
- **Differential lock**
For better driving in loose sandy conditions.
- **Rotating beacon and Reverse alarm**
For safety.

Undivided chassis for a high level of stability...



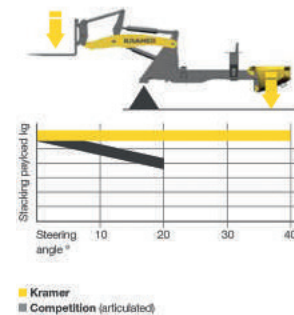
... without a shift in the centre of gravity.

Turning made easy with all-wheel steering...



... instead of time-consuming manoeuvring with an articulated joint.

Constant leverage for constant payload



Operating and Performance Data

Engine output [kW] hp	[55.4] 75
Cabin & AC	Yes
Tipping load [kg]	3,400-3,800
Payload on pallet forks S=1,25 [kg]	2,000-2,350
Operating weight [kg]	4,200-4,714
All wheel steer	Yes
All wheel drive	Yes

Factory built robust front aux hydraulic line for cleaning attachment.



KRAMER
on the safe side



TrackFlex Specification

Cleaning Wet Output Data*

Brush Size	3m	5m	7m
Panel Arrangement	1 Portrait	2 Portrait	3 Portrait
Driving Speed	1,5 - 2,5 km/h	1,5 - 2,5 km/h	1,5 - 2,5 km/h
Panel / hour	1.500 - 2.500 pcs	3.000 - 5.000 pcs	4.500 - 7.500 pcs
Area output /hour	3.000 - 5.000 m ²	6.000 - 10.000 m ²	9.000 - 15.000 m ²
Water usage	0,25 Liter/m ² 0,5 Liter/module	0,25 Liter/m ² 0,5 Liter/module	0,25 Liter/m ² 0,5 Liter/module

Cleaning Dry Output Data*

Brush Size	3m	5m	7m
Panel Arrangement	1 Portrait	2 Portrait	3 Portrait
Driving Speed	2 - 6 km/h	2 - 6 km/h	2 - 6 km/h
Panel / hour	2.000 - 6.000 pcs	4.000 - 12.000 pcs	6.000 - 18.000 pcs
Area output /hour	4.000 - 12.000 m ²	8.000 - 24.000 m ²	12.000 - 36.000 m ²

*Data depends on local conditions and level of soiling (approx. values)

SunBrush General Data

Cleaning System	Rotating bristle brush, wet or dry
Cleaning Speed	1,5 – 6 km/h
Brush Lengths	3m, 3,5m, 4,5m, 5m, 5,5m
Brush Type	350mm bristle = standard brush, for vast majority of systems 500mm bristle = NexTracker systems
Weight	500 - 650 kg
Controls	Proportional Can-Bus joystick
Float Safety System	WashTronic, patented, automated safety levelling contact pressure system
Swivel Range	180°, to enable cleaning on the left and right of carrier vehicle
Water Settings	Single or double sided, controlled on joystick



SunBrush® mobil GmbH
 Am Bahnhof 14
 87760 Lachen - Germany
 info@sunbrushmobil.com
 +49 (0)8332/ 243 43 - 0
 www.sunbrushmobil.com

