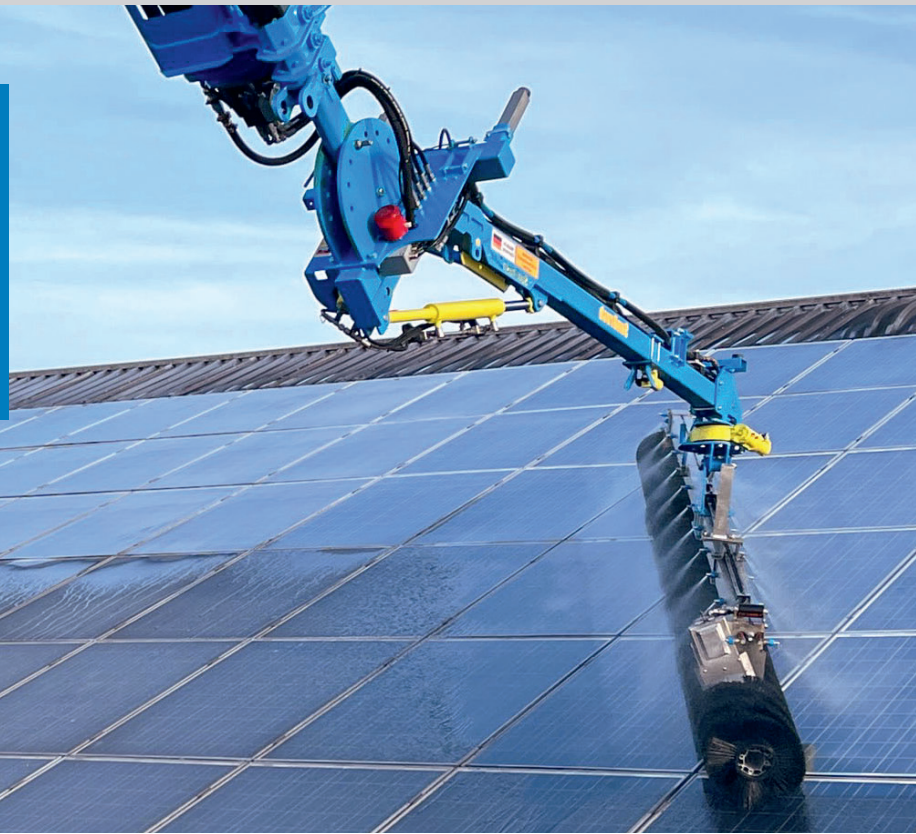




SunBrush *mobil* Crane

Versatile Solar Cleaning Solution

**More efficient
vehicle usage.
Higher income.**



Benefits:

- long range and short changeover times
- safe operation during the cleaning process of the photovoltaic and solar systems
- compatible with a lot of crane vehicles
- additionally benefits by using your crane vehicle for other purpose



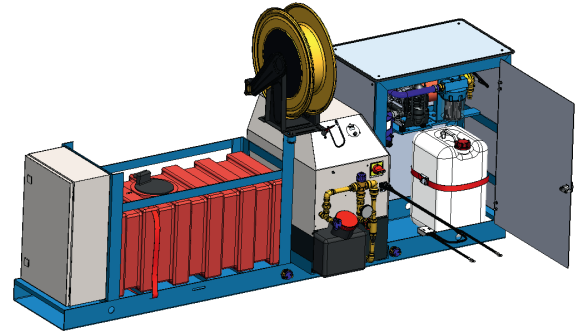
SunBrush *mobil* Crane

Versatile Solar Cleaning Solution

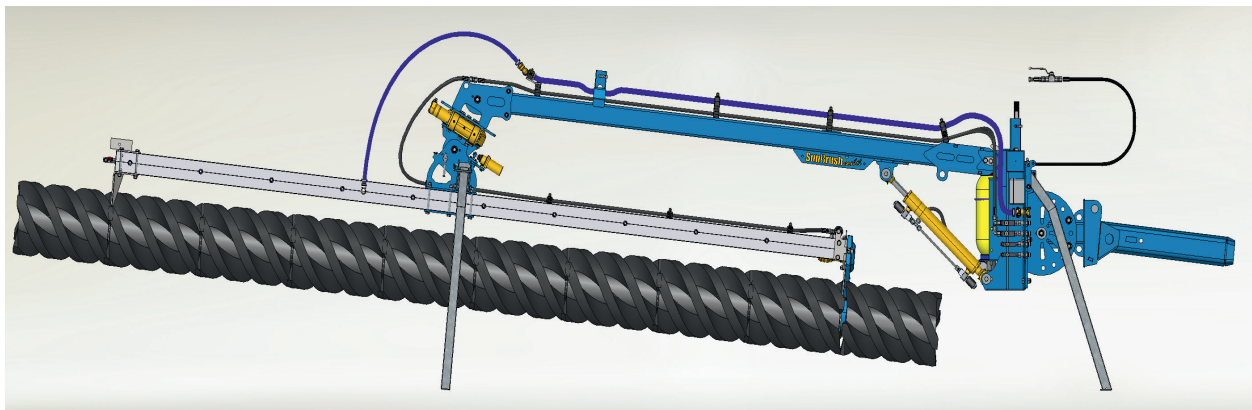
Technical requirements crane side:

- 1 double-acting oil circuit for the drive (rotation) of the brush, ratchet circuit left/right run DN12 approx. 30-40 liters/minute adjustable at max. 200 bar.
- 1 double-acting oil circuit for swiveling the brush, ratchet circuit proportional DN10 approx. 10 liters/minute max.
- 160 bar.
- The two oil circuits must be available without restriction at continuous pressure.
- For the operation of the water pump, oil circuit with max. 180 bar, 10 liters/minute.
- Water line inner diameter min. 18 mm, 50 deg.
- water temperature and max. 8 bar pressure.

Transportkonsole:



- 7-core 2.5 square power cable 24 V.
- continuous current and a black/white signal for brush level compensation.
- All functions are operated via the crane remote control. The crane manufacturer is responsible for programming the crane control.



SunBrush *mobil*
Cleaning Systems



SunBrush® mobil GmbH
Am Bahnhof 14
87760 Lachen - Germany
info@sunbrushmobil.com
+49 (0)8332/ 243 43 - 0
www.sunbrushmobil.com

